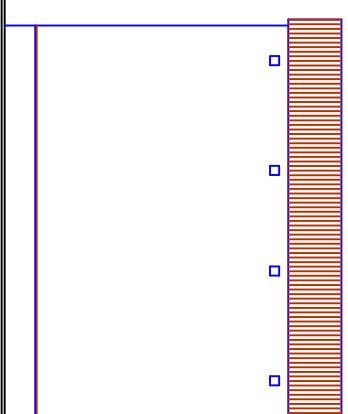
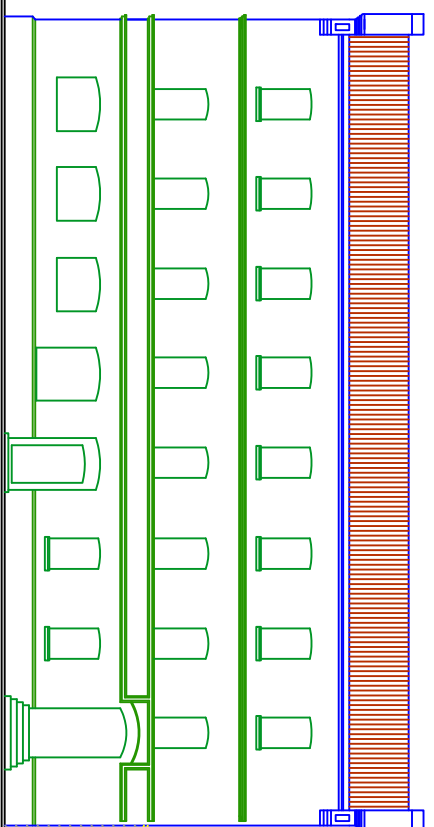
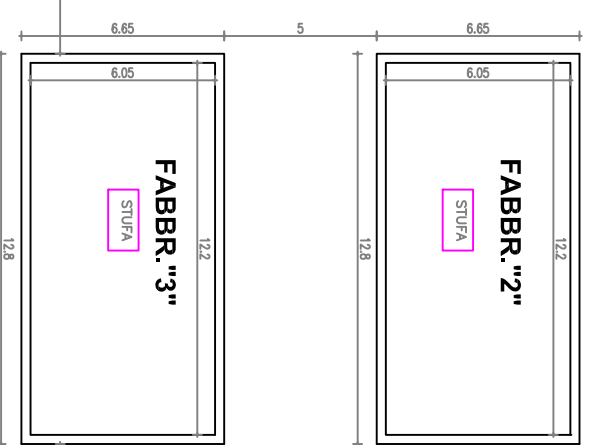
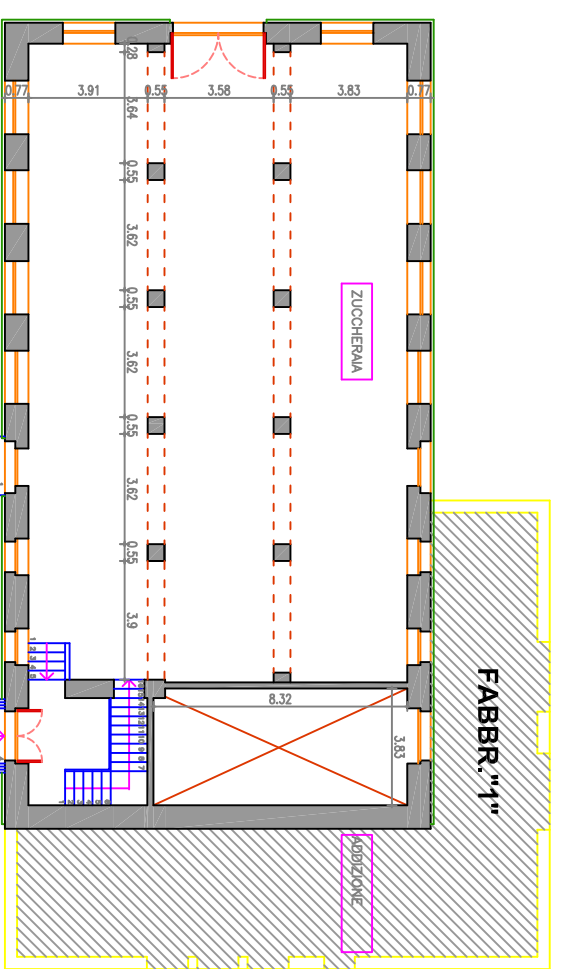


"LA ZUCCHERAIA" A MARCIANO DELLA CHIANA PLANIMETRIA GENERALE



RESEDE sup. mq.3.500 circa



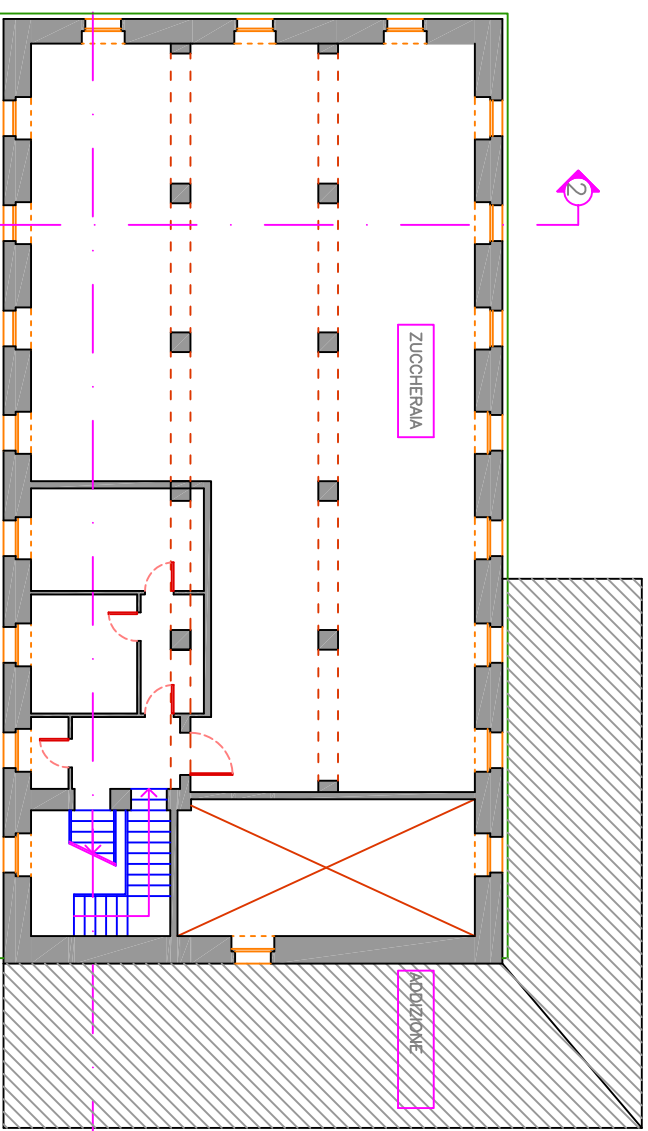
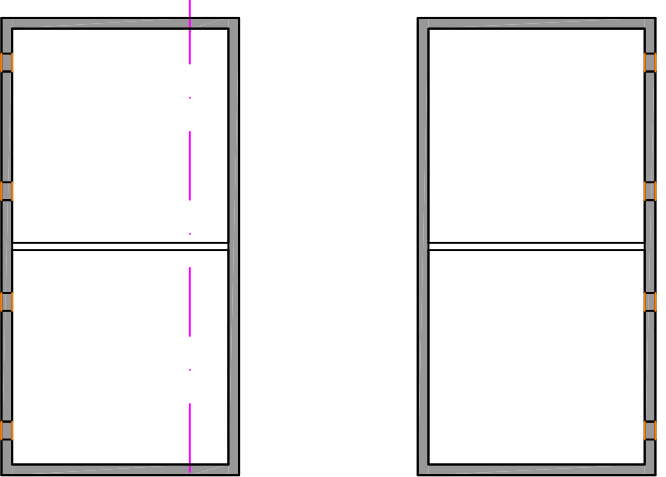
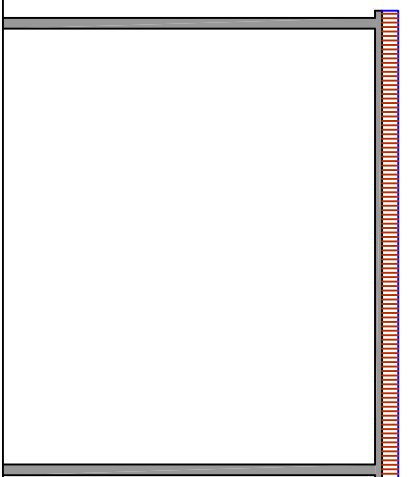
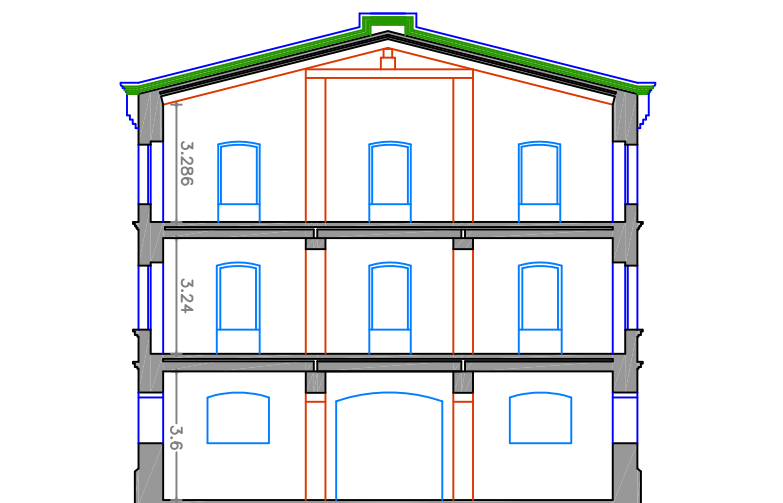
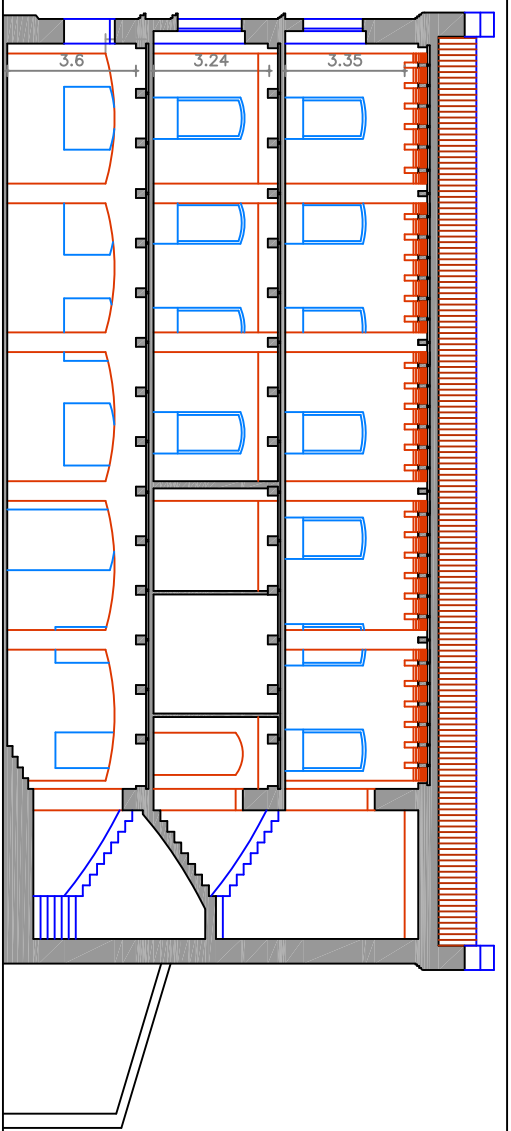
**ZUCCHERAIA**  
 Superficie utile a piano 300,00 mq.  
**TOTALE SUPERFICIE UTILE NETTA 900 MQ.**

**FABBRICATO 1**  
 Superficie utile lorda 124,00 mq.  
 Volume: 124,00xHm3,8=471,20 mc.

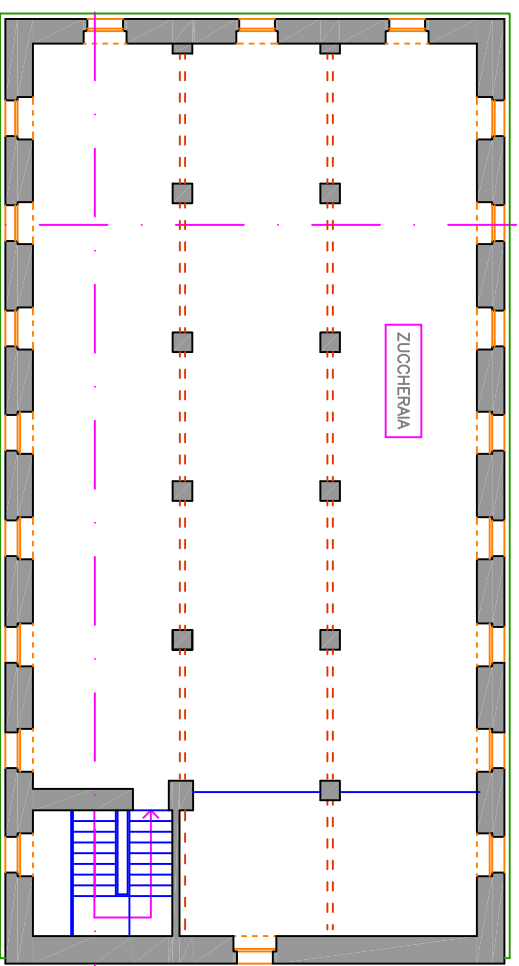
**FABBRICATO 2**  
 Superficie utile lorda 85,00 mq.  
 Volume: 85,12 x 9,95 Hm=mc.846,95

**FABBRICATO 3**  
 Superficie utile lorda 85,00 mq.  
 Volume: 85,12 x 9,95 Hm=mc.846,95

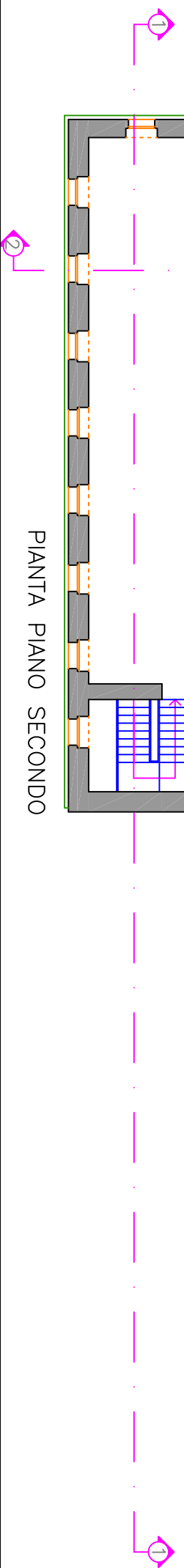
18

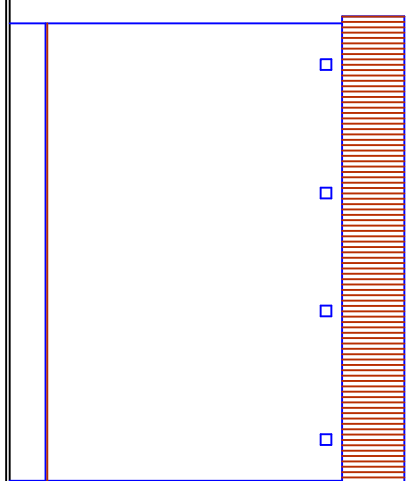
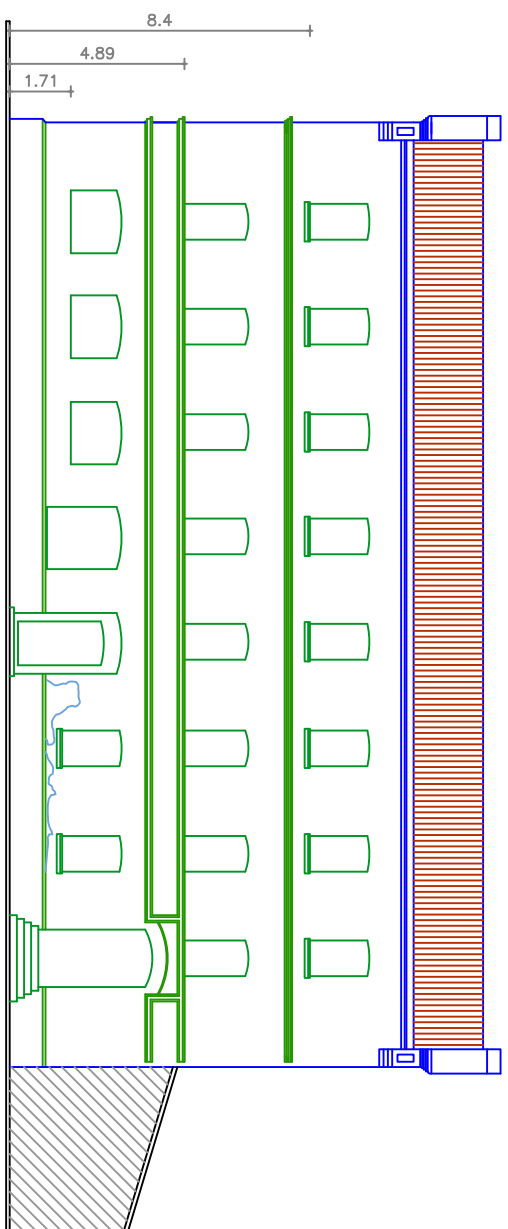


PIANTA PIANO PRIMO



PIANTA PIANO SECONDO





PIANTA PIANO TERRA

